

Office Space for Lease

600 N.E. 4th Street, Oklahoma City, OK 73104 (SE corner of 4th and N. Lincoln)



OFFICE SPACE NOW AVAILABLE

Available SF:	±2,901 SF Entire 2nd floor
Lease Rate:	\$20.00 psf with \$.50 annual increases Tenant pays utilities and janitorial
Building Size:	±6,734 SF
Term:	5 year minimum

PROPERTY OVERVIEW

JHBR Architects, Inc. is designing plans for an extensive renovation to the Morgan Building. Dr. C. Wesley Morgan built the property in 1946 in a predominately black community for his medical clinic. Other tenants at that time included a dental office, pharmacy, beauty salon, gift shop and Blacks Flowers. The Kappa Alpha Psi Fraternity lounge was located in the basement. JHBR occupies the 2nd floor. On-site parking south of the building is available.

LOCATION OVERVIEW

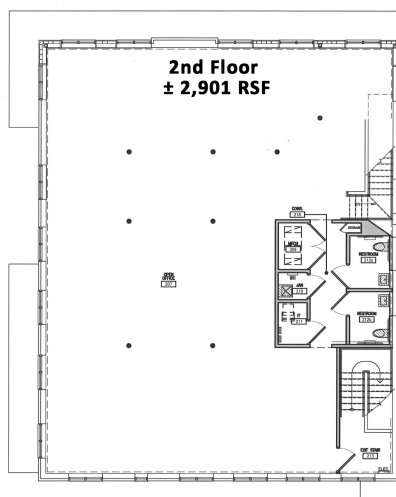
Located at 4th and Lincoln just south of the OU Health Science Center and catercorner from the University Research Park (formerly Presbyterian Health Foundation Research Park). Easily accessible from I-40 and I-235 only 6 blocks from Downtown OKC and walking distance to the Deep Deuce and Bricktown.

FOR MORE INFORMATION, CONTACT

Tom Fields
tfields@pricedwards.com
405.239.1205
210 Park Ave, Suite 700
Oklahoma City, OK 73102
www.pricedwards.com

Office Space for Lease

600 N.E. 4th Street, Oklahoma City, OK 73104 (SE Corner of 4th & N. Lincoln)



SECOND FLOOR PLAN
SCALE 1/8"=1'-0"

